



DOMAIN DE LA GANDONNIERE

TELOCHE (72), CLOSE TO LE MANS, FRANCE

TEL : + 33 (0)6 37 04 76 28

WWW.DOMAINEDELAGANDONNIERE.COM

Estate with Charm & Tradition

A place of **history and tradition**, the **Domain de la Gandonnière** is a **nice estate located** south of the city of **Le Mans**, its **Royal Plantagenet city**, the **Royal Abbey of Epau**, and very close to the **Mulsanne Corner** of mythical **Circuit of the 24 Hours of Le Mans**..

Originally a farmer's estate dependent on the **Seigneurie D'Outillé**, the Estate then participated in the **boom in hemp production** in the **Bélois région** in the 19th and 20th centuries.

A **remarkable heritage site**, with its **roofs “à la Philibert de l'Orme” (Architect of King Henri II)** called “**roof in the shape of an upturned boat hull**”, the estate has retained all its **historical charm**, as well as its **Hemp oven**.

The Domain de la Gandonnière, **opened in July 2021**, is a place combining **the tradition of its history and the modernity of its renovation**.



RECEPTION

INTERIOR & OUTSIDE

Cozy, Modularity



In the middle of **the fields**, on over 10,000 m², the Domain de la Gandonnière is organized into **several modular spaces** that are fully **accessible for people with reduced mobility**.

To **organize a reception**, you have **a reception room of 120 m²** and **a main courtyard of 600m²**, with all the **professional equipment** available (tables, chairs, crockery, etc.) but also a **fully equipped kitchen** with an external space dedicated to the caterer.

For **your cocktails**, the **main courtyard** or the **80 m² covered terrace** with its **large green space** are available depending on the theme of your evening.

For **the diner**, the **reception room** can **comfortably accommodate 20 to 100 seats** at round or rectangular tables, and maximum **120 people on cocktail configuration or mixte**.

The **management is free**, so you can **choose ALL your usual service providers and services** or we can accompany you on request (meals, party tents, Music, etc...)



ACCOMMODATION

INTERIOR & OUTSIDE

Comfort , Modernity,

For sleeping, 3 possibilities.

The bedroom building, to accommodate **32 people.**, located on the edge of the main courtyard, includes **5 modular bedrooms**, each with its own private bathroom.

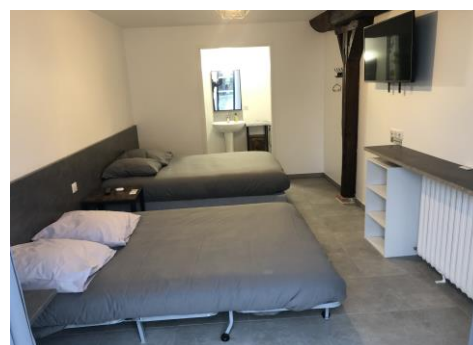
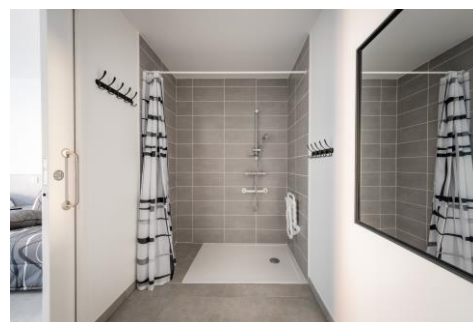
- **Bedroom 1:** for **6 people**, 4 single beds + 1 Convertible double bed
 - **Bedroom 2:** for **3 people**, 1 Double bed + 1 Convertible single bed
 - **Bedroom 3:** for **4 people**, 1 Double bed + 1 Convertible double bed
 - **Bedroom 4:** for **4 people**, 1 Double bed + 1 Convertible double bed
 - **Bedroom 5:** for **4 people**, 1 Double bed + 1 Convertible double bed
- Rooms 2 and 3, for **people with reduced mobility**.

Upstairs

- **a dormitory with 11 sleeping places** (7 single beds & 2 double beds) ,

Outside, 2500 m² of lawns can be used to fit out tents or temporary structures. **A bathroom for campers** is available with three showers and two toilets.

On the **45-space car park**, it is possible to install motorhomes and trucks.



PLACE OF LIFE

MODULAR & EASY ACCES

Welcoming,



The **Domain de la Gandonnière** with its **outdoor spaces**, its **petanque ground** and its **rural setting**, will allow you to organize **convivial moments** according to your desires.

Located in the town of Teloché, rich in a long **history** since the **Middle Ages** and **cradle of Porsche history** at the **24 Hours of Le Mans**, there are many places around to discover with The **Old town of Le Mans**, The **Royal Abbey of épau**, the **Le Mans 24h Circuit** and its **Automobile Museum**, **La Flèche Zoo**, **PAPEA Park**, the **lime kiln**....

To come, **access is very simple** because the Domain de la Gandonnière is located **10 km from the A28 motorway, exit ECOMMOY**, and near the **national road D338 Le Mans / Tours**.

The Domain is **2h20 from Paris by car** and **1h by Train**.

Any requests, Please contact us :

Tel : +33 (0)6 37 04 76 28

Mail : DOMAINEDELAGANDONNIERE@GMAIL.COM

Regards

Laurence & Jean-Francois

Domain de la Gandonnière – La gandonnière – 72220 TELOCHE - France

To organise your visit :



Direct Acces by Motorway A28,

Exit : **A28**



By GPS :

La gandonnière, 72220 TELOCHE